



OWNER'S MANUAL HUSKY-PRO

PRO
EN 14492-1



ELECTRICALLY POWERED WINCHES

www.superwinch.com

*Winch shown for
illustration purposes only*

Superwinch LTD.

Union Mine Road, Pitts Cleave
Tavistock, Devon. PL19 0PW

Tel: +44 (0) 1822 614101

Fax: +44 (0) 1822 615204

E-mail: sales@superwinch.net

Superwinch LLC.

Winch Drive, Putnam
Connecticut 06260 U.S.A.

Tel: 01 800 323 2031

Fax: 01 860 963 0811

E-mail: info@superwinch.com

Owner's Manual

8514-PRO, 12v Husky Pro

8515-PRO, 24v Husky Pro

8532-PRO, 12v Husky Pro with Roller Fairlead & Mount Plate

8533-PRO, 24v Husky Pro with Roller Fairlead & Mount Plate

8552-PRO, 12v Husky Pro with Roller Fairlead & Wire Rope

8553-PRO, 24v Husky Pro with Roller Fairlead & Wire Rope



These instructions cover kits from
01/01/2010

01 INTRODUCTION

02 GENERAL SPECIFICATION DATA

03 INSTALLATION

ELECTRIC SYSTEM
WINCH
CABLE

04 MAINTENANCE AND USE

FREESPOOL USE
RUNNING IN, MAINTENANCE & SERVICING
TIPS FOR EXTENDING THE LIFE OF YOUR WINCH

05 SPARES & ACCESSORIES

06 WARRANTY

07 NOTES

For all your requirements please contact your Superwinch agent



Thank you for purchasing a Superwinch Pro. It has been designed and manufactured to meet BS EN 14492-1, Power Driven Winches Standard, and provide years of trouble-free operation.

Please read and understand this Owner's handbook before using your winch. Your winch is a very powerful machine. If used unsafely or improperly, there is a possibility that property damage or personal injury can result. We have included several unique features in the winch to minimize this possibility, however, your safety ultimately depends on your caution when using the product. Correct installation of your winch is a requirement for correct operation. Pay particular attention to the winch installation section in this handbook.


Congratulations on your choice.


These instructions are designed to assist skilled technicians in the efficient installation of a Superwinch, using the appropriate trade tools. Superwinch reserve the right to alter model specification without prior notice.

PLEASE RETAIN THIS HANDBOOK WITH THE WINCH

WARNINGS, CAUTION AND NOTES

These are given through these instructions in the following form :

 **WARNING : Procedures which must be followed precisely in order to avoid the possibility of personal injury.**

 **CAUTION : This calls attention to procedures which must be followed to avoid damage to components.**

 **NOTE : This calls attention to methods which make a job easier or gives helpful information.**

USAGE OF WINCH

This winch is designed for use in applications such as Pulling, Hauling, and other associated uses.

IMPORTANT: Superwinch winches are not to be used to lift, support or otherwise transport personnel. Any such use shall be considered to invalidate the warranty and Superwinch shall not be responsible for any claims arising from such use.

REPAIRS AND REPLACEMENTS

Before you contact Superwinch or your nearest Dealer please have ready the following information: Kit No, Serial No, and Part No. required

POISONOUS SUBSTANCES

Many liquids and other substances used should under no circumstances be consumed, and should be kept away from open wounds. These substances include (among others) hydraulic oil.

SYNTHETIC RUBBER

Many 'O' ring seals, flexible pipes and similar items, when subjected to fire or heat can become highly corrosive. Handle with seamless gloves only. Should skin contact occur, remove contaminated clothing immediately and obtain medical assistance without delay. Meanwhile, wash the affected area with copious amounts of cold water or limewater for 15 to 60 minutes.

RECYCLING AND THE ENVIRONMENT

It is illegal to dispose of used oil in the ground, down sewers or drains or into waterways. Dispose of used oil through authorised waste disposal contractors. If in doubt contact your local Authority for advice on disposal facilities.

GENERAL DESCRIPTION

The winch is powered from a vehicle battery . See electric installation section. The drum can be disengaged, to enable the rope to be pulled out easily and quickly. The winch is equipped with an adjustable freespooling damper to help alleviate the possibility of wire rope over-run on the drum.

The irreversible Worm / Wormwheel gearing provides substantial breaking to prevent the load from causing the winch to 'back-drive'. The winch is reversible with 'power-in' and 'power-out' via a directional control mounted on the vehicle or through a handheld wander lead. The standard unit is supplied with clockwise drum rotation on 'winch- in' when viewed from the motor / gearbox end. The winch can be used in both 'over-wound' and 'under-wound' conditions.

02

SPECIFICATION DATA

Gear Reduction:	Heavy duty wormgear for long life.
Drum:	Fabricated steel mounted on maintenance free plain bearings.
Braking:	Irreversible wormset give full load holding.
Mounting:	Can be flat bed or bumper mounted.
Load Limiter:	Factory set thermal overload cut out.
Labelling:	Rating Plate showing 1st layer and top layer figures. Roller Fairlead warning label.



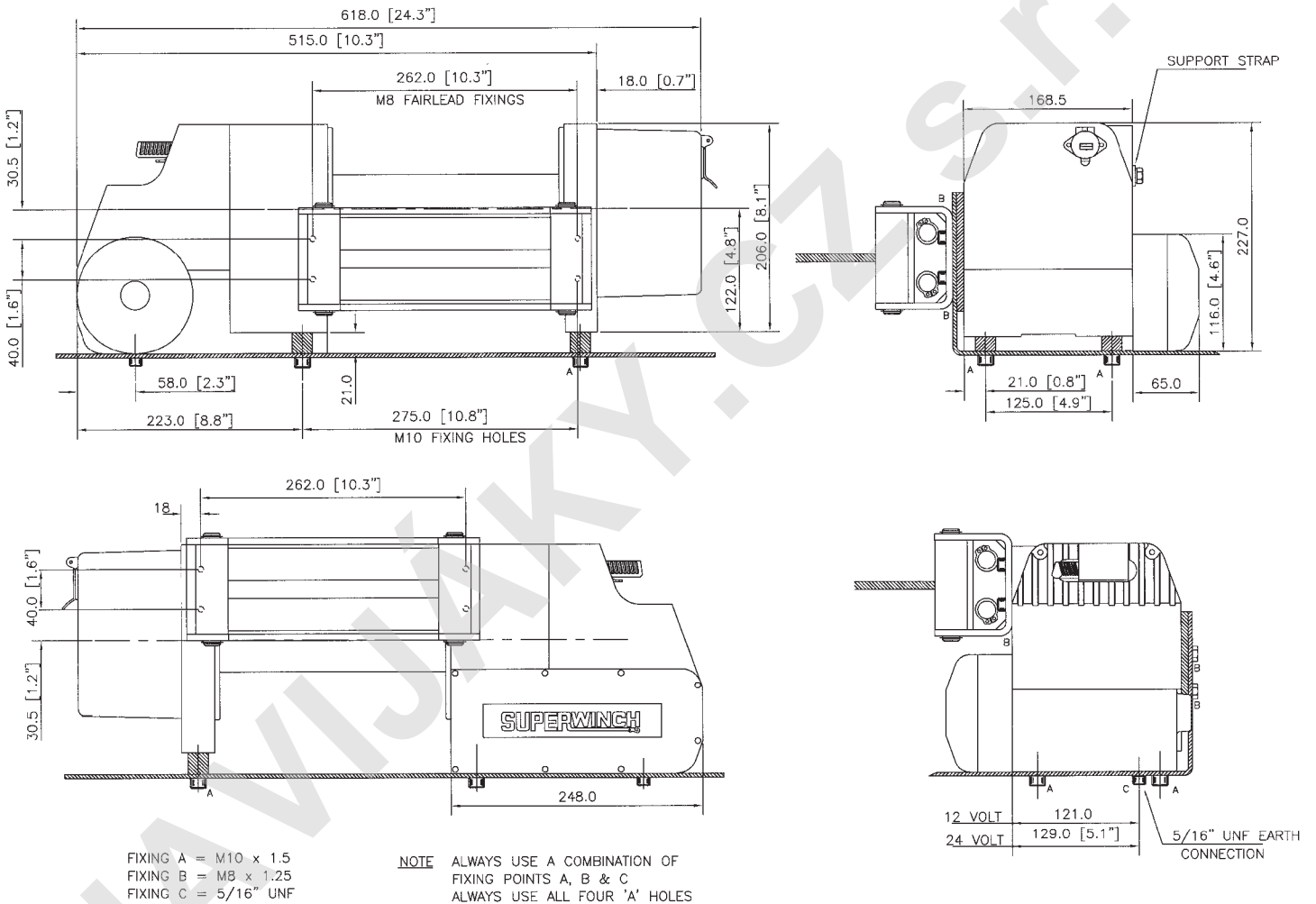
Model Designation	Husky Pro, 12v Winch only	Husky Pro, 12v With Roller Fairlead and Mount Plate	Husky Pro, 12v With Roller Fairlead and Wire Rope
Part No:	8514-PRO	8532-PRO	8552-PRO
Weight (Winch Only):	37 kg	37 kg	37 kg
Recommended Rope Diameter:	8 mm	8 mm	8 mm
Drum Capacity:	30 M	30 M	30 M
Drum Diameter (10:1 D:d ratio):	72 mm	72 mm	72 mm
Line Speed (1st Layer, No Load):	7.8 M/min	7.8 M/min	7.8 M/min
Design Line Pull	37.8 kN (3860 kg)	37.8 kN (3860 kg)	37.8 kN (3860 kg)
Line Pull (Bottom Layer):	24.5 kN (2,500 kg)	24.5 kN (2,500 kg)	24.5 kN (2,500 kg)
Motor	1.43 kW (1.9 hp)	1.43 kW (1.9 hp)	1.43 kW (1.9 hp)
Freespool	Manual	Manual	Manual
Model Designation	Husky Pro, 24v Winch only	Husky Pro, 24v With Roller Fairlead and Mount Plate	Husky Pro, 24v With Roller Fairlead and Wire Rope
Part No:	8515-PRO	8533-PRO	8553-PRO
Weight (Winch Only):	37 kg	37 kg	37 kg
Recommended Rope Diameter:	8 mm	8 mm	8 mm
Drum Capacity:	30 M	30 M	30 M
Drum Diameter (10:1 D:d ratio):	72 mm	72 mm	72 mm
Line Speed (1st Layer, No Load):	7.8 M/min	7.8 M/min	7.8 M/min
Design Line Pull	37.8 kN (3860 kg)	37.8 kN (3860 kg)	37.8 kN (3860 kg)
Line Pull (Bottom Layer):	24.5 kN (2,500 kg)	24.5 kN (2,500 kg)	24.5 kN (2,500 kg)
Motor	1.6 kW (2.1 hp)	1.6 kW (2.1 hp)	1.6 kW (2.1 hp)
Freespool	Manual	Manual	Manual

To ensure that winches are compliant with the European standard, BS-EN14492-1 Superwinch recommends that wire ropes should be as follows:

8mm dia for Husky winch with a tensile grade of 1960 and a min break figure of 5000 kg (49.0kN)

WINCH INSTALLATION

1. All dimensions are in mm.
2. Winch mounting can be via a winch mount plate (See Superwinch Accessories).
3. The winch (together with it's mounting plate if fitted) must be securely bolted onto a mounting surface that is flat within 0.5mm and sufficiently stiff to prevent flexing.
4. All four winch mounting holes marked 'A' must be used.
5. Although the winch may be mounted in either 'overwound' or 'underwound' positions, 'underwound' is recommended.
6. Mounting bolts must be 8.8 grade high tensile steel.



03

WINCH INSTALLATION

INTERMITTENT DUTY

All electric winches of this size are rated for intermittent use because of the electric motor efficiency and the electric power available from the vehicle battery and alternator. This means that the winch must only be used for short periods of time then allowed to cool down.

If the motor becomes uncomfortably hot to touch, stop winching and allow the motor to cool.

If the winch motor stalls do not continue to apply power to the winch.

The performance rating of all electric winches is based on the first layer of rope on the drum. The winch pulling capacity decreases as each successive layer of rope wraps onto the drum.

ELECTRICAL INSTALLATION

Precautions: Leave all cable connections to the battery terminals unconnected until all wiring has been installed and checked thoroughly for correct connections, as damage to the vehicle wiring circuit could be caused by wrong connection once the battery is connected. All wiring should be bound and securely fastened to adjacent structure using the cable ties supplied where necessary.

Because of the high current draw inherent in all electric winches it is recommended that the engine of your vehicle is kept running during the winching operation to ensure that the battery is not drained for vehicle restarting.

Be sure that the battery is always fully charged and maintained.

The performance of an electric winch is directly dependant on the quality and capacity of the battery and alternator. If the winch is in heavy use, an auxiliary battery and heavy duty alternator with a battery isolator are recommended.

It is **essential** to use the control solenoids supplied with your winch so that burn out of the electric system does not occur.

Warning: Do not, under any circumstances, wire the winch direct from the vehicle battery. Do not connect either winch or solenoids to 240 volt a.c. house current as solenoid burn out or fatal shock may occur.

Note: For safety reasons, we recommend the installation of Isolator switch Part No. 8370, which can be used to cut power to the winch. The switch should be wired in line with the power lead from the battery positive terminal (see wiring diagrams). It should be mounted in a position where power can be switched off in an emergency.

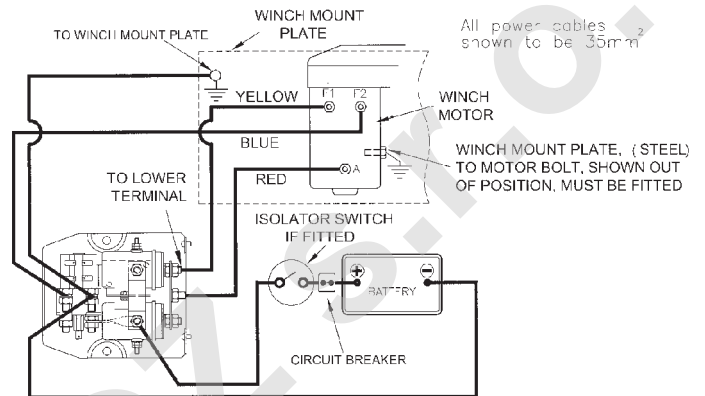
The winch operates on standard automotive 12 or 24 volt direct current.

Step (1) Disconnect the battery 'negative' terminal connection.

Step (2) Remove the solenoid cover.

Caution: When attaching wires to the motor terminals and solenoids, hold the inner nut when tightening the outer nut. Do not allow the motor or solenoid terminals to rotate causing internal wire breakage. Step (3) Remove motor cover. Check motor terminals against wiring diagram for identification.

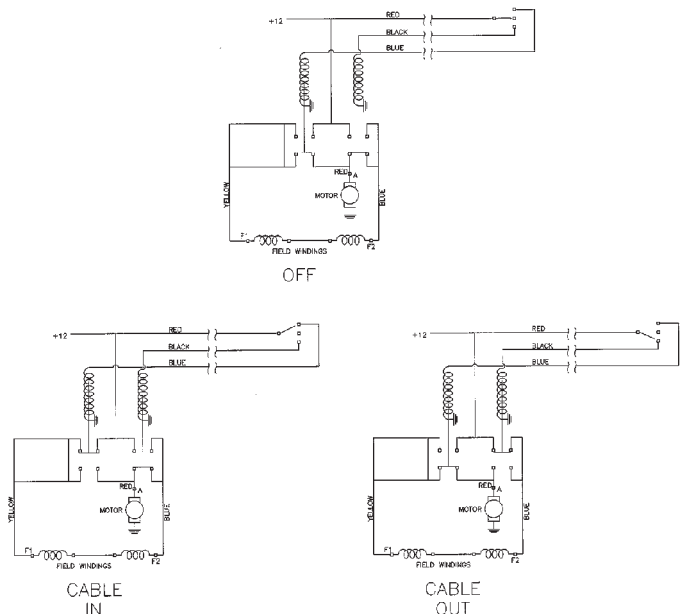
Step (4) Attach lead wires as shown in wiring diagram (Fig. 5). Please note that lead wires are not supplied for connection to the battery +ve and -ve. This is because these leads can be of very different lengths dependant on the various vehicle / mount configurations. The wire used to power the winch offers resistance to the flow of electric current. The longer the wire the more the resistance. When more resistance to current flow occurs, less current is available at the motor causing it to run slower and have less power.



Superwinch recommends battery cables of 35mm squared, for cable lengths of up to 3.5 metres between the winch and the power supply, (battery).

35mm squared electric cable = 2 AWG or 8mm diameter core.

If the distance between winch and power supply is greater than 3.5 meters, larger diameter electric cables may be necessary, please check with your electric cable supplier.



All winch systems must be protected by an efficient Emergency Stop system, electric winches should be fitted with a highly visible Emergency stop switch and suitable heavy duty in-line contactor.

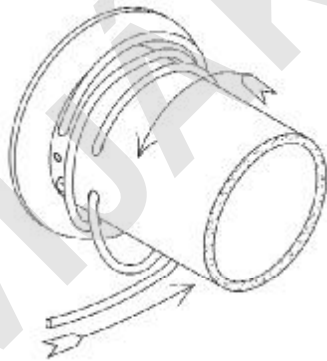
WIRE ROPE SPECIFICATION

The rope must be of good quality, have a steel core and meet the specification detailed on the certificate of conformity.

Avoid pulling a load at more than a 15 degree angle in relation to the winch. This will reduce wear and tear on the winch and the cable.

WIRE ROPE INSTALLATION

1. Unwind the cable by rolling it out along the ground with the tapered end nearest to the winch. NEVER wind the cable straight onto the drum from a coil.
2. Raise the cable tensioner away from the rope drum (if supplied as part of your kit), and lock in position through the corresponding holes in the tensioner frame and bracket using a suitable pin or bolt.
3. Rotate the rope drum under power until the rope fixing holes run vertically at the front of the winch.
4. Pass the rope end through the roller fairlead, under the drum and back over the top of the drum to pass through the rope hole furthest way from the drum flange. Keep feeding the rope through to wrap around the drum **FOUR TIMES** and into the rope fixing hole nearest the drum flange.
5. Tighten the retaining screw ensuring that the rope end is flush with the exit of the hole and not protruding.
6. Feed back any excess slack to tighten the four wraps neatly on the drum.
7. Remove the locking pin from the cable tensioner to allow the rollers to rest on the rope. Note: This assembly is under tension. Special care should be taken to avoid trapping fingers, clothing etc.
8. Apply moderate tension to the rope. Take care to ensure the layers are neatly wrapped, as this will minimise damage to the lower layers of rope when a load is applied.



Two wraps illustrated for clarity.

PULLING OUT THE ROPE

Dis-engage the freespool. With a pair of gloves on, pull out the rope and secure to anchor or load. Re-engage the freespool.

FREESPOOL OPERATION

When wire rope is removed from the drum, as in bringing the hook to the load, the freespool features of the winch should be used.

To Engage: Turn the freespool handle to the 'engage' position. It may be necessary to turn the drum slightly to line up the driving splines.

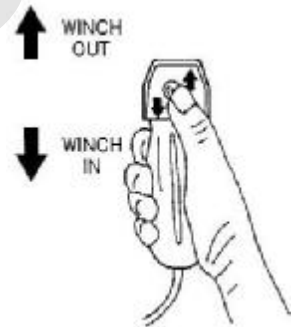
To Disengage: Turn the freespool handle to the 'disengage' position.

DO NOT ATTEMPT to pull a load until the freespool / drum is fully engaged.

Operate the winch.

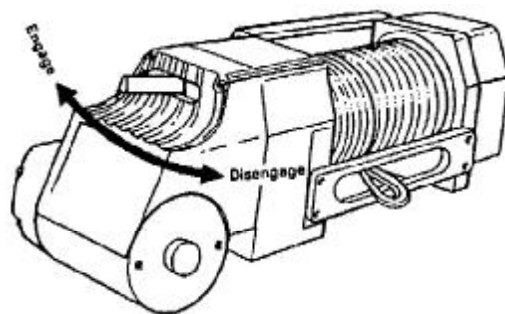
REMOTE CONTROL OPERATION

The winch power is supplied via a hand held remote control handset, supplied with a 3.5 meter cable, which enables winch-in and winch-out. To operate, connect the remote control into the socket (marked with a caravan logo) by lifting the flap and inserting the plug. The plug is keyed to ensure correct connection. To winch in, move the switch downwards. To winch out, move the switch upwards. To remove the plug from the socket, lift the flap slightly and remove the plug.



The gearbox drive in the Husky winch can be disengaged to enable free-spooling of the rope storage drum so that the rope may be pulled out. **Do not** operate the remote control in this case.

Winch Out Mode: Instantaneous stopping of the load during "Winch Out" mode may be achieved by momentarily operating the control switch in the "Winch In" mode then releasing to the "Off" position.



RUNNING IN

Ensure your winch has been filled with the correct oil before proceeding.

Extra time spent running-in is well repaid by a more efficient and reliable winch. Your Husky winch should not be used to pull heavy loads until it has been run-in as below.

1. Run the winch with no load or very light load for 1-2 hours.
2. Gradually increase the loads up to maximum over a period of 2 or 3 hours, (the longer the better), drain the worm box and refill with fresh BP Energear Hypo 85W-140 oil or equivalent.

MAINTENANCE

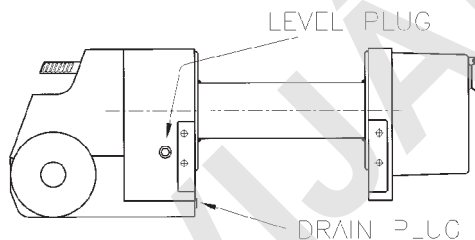
Periodically check the tightness of mounting bolts and electrical connections, remove any dirt or corrosion that may have accumulated on the electrical connections.

After the first 10 hours of operation: Change worm gearbox oil (see diagram for location of drain and filler plugs), check tightness of mounting bolts and electrical connections.

Monthly: Check tightness of all electrical connections and remove dirt or corrosion that may have accumulated, check oil level in worm gearbox.

After 50 hours of operation or annually: Change worm gearbox oil. Check tightness of mounting bolts and electrical connections.

Repairs should be carried out by authorised Superwinch repair centres only. Do not attempt disassembly of the gearbox as this will void the warranty.

**LUBRICATION**

Freespool Handle: Lubricate regularly with light oil.

Drum Bearings - These are self-lubricating but are lubricated with molydisulphide loaded bearing grease when assembled.

The spur and worm gearboxes are self contained and individually lubricated. The spur gearbox is factory filled for life with BP Energear FGL or equivalent, the wormbox is filled with BP Energear Hypo 85W-140 oil or equivalent. These lubricants are suitable for most climates, in extreme climates contact Superwinch for advice.

Note: EP (Extreme Pressure) additives can damage copper based alloys like phosphor bronze used for the worm gear and we do not recommend their use in the worm gearbox. If any doubt exists, consult your lubricant supplier's technical department.

The drum bearings and splined drum clutch are lubricated with molydisulphide loaded bearing grease.

SERVICING

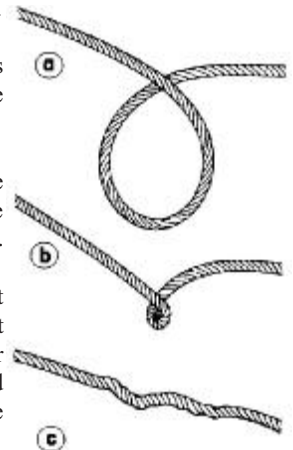
Before you contact Superwinch or your nearest Dealer for parts, please have ready the following information:

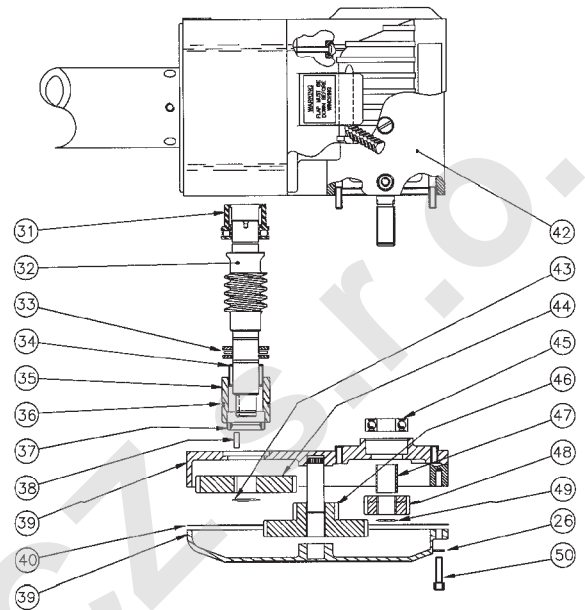
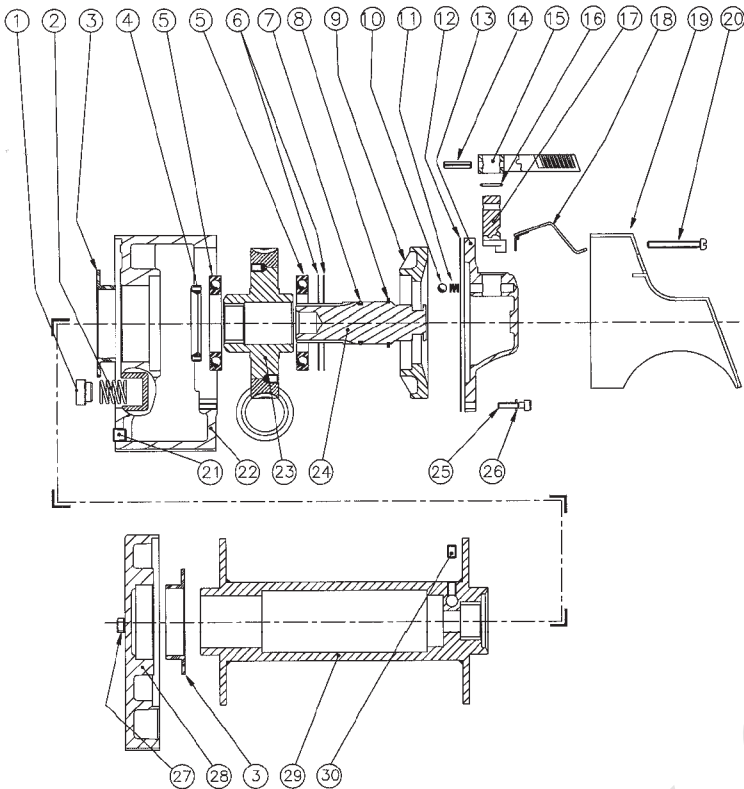
* Kit No. * Serial No. of Winch * Part No. Required

When ordering spare parts from these lists, always quote the winch serial number and the part number **not** item number of the spare part required. This will ensure the correct part is despatched to you. The serial number of your winch is located on the data plate on the motor support casting.

TIPS FOR EXTENDING THE LIFE OF YOUR WINCH

1. **Note:** Installing the wire rope is not included in the running-in period. Check tightness of all mounting bolts after running-in period.
2. **Keep a tightly wound rope drum.** Do not allow the windings on the drum to become loosely wound. A loosely wound spool allows a rope under load to work its way down into the layers of the wire rope on the drum. When this happens, the lower layers become damaged and the rope may become wedged within the body of the windings. To prevent this problem, keep tension on the rope at all times. A good practise is to rewind the rope under tension after each use.
3. **Prevent kinks before they occur.**
 - a) This is a start of a kink. At this time, the rope should be straightened.
 - b) The rope was pulled and the loop has tightened to a kink. The rope is now permanently damaged.
 - c) The result of kinking is that each strand pulls a different amount causing the strands under greatest tension to break and reduce load capacity of the wire rope.
4. **Use a snatch block for heavy loads.** To keep wear to a minimum, use a snatch block to double line heavy loads. Double lining reduces the work required of the gears by one half which in turn reduces wear.
5. The pull required to start a load moving is often much greater than the load to keep it moving. Try to avoid stopping and starting during a pull.





Item	Description	Part No.	Qty.	Item	Description	Part No.	Qty.
1	Brake Shoe	317	2	33	Thrust Washer	4-03-2542303	2
2	Brake Spring	320	2	33	Thrust Bearing	4-07-2542203	1
3	Flanged Bearing	7658	2	34	Needle Bearing	4-12-25322013	1
4	Oil Seal	4-22-5572103	1	35	Location Plug	7667	1
5	Ball Bearing	4-13-55090113	2	36	'O' Ring	4-21-6543	1
6	Shim, 0.07mm	4-01-8090073	A/r	37	Oil Seal	4-22-2535073	1
6	Shim, 0.12mm	4-01-8090123	A/r	38	Key	7764	1
7	'O' Ring	4-21-7813	1	39	Gear Housing / Cover Assembly	8738	1
8	Circlip	4-24-4053183	1	40	Gasket	7689	1
9	Bearing Carrier	7654	1	42	Electric Motor, 12 volt	7682	1
10	Steel Ball	4-54-79324	1	42	Electric Motor, 24 volt	7694	"
11	Spring	4-31-7629510223	1	43	Circlip	4-24-1927103	1
12	Gasket	7688	1	44	Wormshaft Gear, 46t	7666	1
13	Clutch Housing	7652	1	45	Ball Bearing	4-13-017040123	1
14	Roll Pin	4-56-602603	1	46	Intermediate Cluster, 32t, 229 ratio	85-90171	1
15	Operating Lever	7673	1	46	Intermediate Cluster, 27t, 294 ratio	85-90172	"
16	'O' Ring	4-21-6423	1	47	Spacer	7686	1
17	Clutch Shaft	7676	1	48	Motor Gear, 32t, 229 ratio	85-54008	1
18	Safety Flap Assembly	10161	1	48	Motor Gear, 27t, 294 ratio	7663	"
19	Motor Cover	10166	1	49	Circlip	4-24-1622113	1
20	Set Screw, M6 X 50mm	4-71-0605023	2	50	Cap Hd Screw, M6 X 25mm	4-36-0602522	8
21	Pressure Plug	4-29-224	2				
22	Wormbox	7643	1	NS	Control Box, 12 Volt	85-90316	1
23	Wormwheel / Worm set	85-95019	1	[NS	Solenoid, 12 Volt (pair)	90-22628-05	1]
24	Clutch Member	7659	1	NS	Contactora, 12 Volt (single)	4-124-033	1]
25	Cap Hd Screw, M6 X 25mm	4-36-0602522	8				
26	Spring Washer, M6	4-51-0623	16	NS	Control Box, 24 Volt	85-90049	1
27	Set Screw, M8 X 16mm	4-32-0801622	8	[NS	Solenoid, 24 Volt (pair)	90-22628-04	1]
28	Support Housing.	7645	1	[NS	Contactora, 24 Volt (single)	4-124-043	1]
29	Rope Drum Assembly	85-90005	1				
30	Skt Set Screw, M8 x 12mm	4-40-081203	1	[NS	Control Box Cover	7709	1]
31	Roller / Thrust Bearing	7721	1	[NS	Socket Assembly	90-14140	1]
32	Worm / Wormset Assembly	85-95019	1				

05

OPTIONAL ACCESSORIES

Optional accessories, designed by Superwinch exclusively for the Husky:



Roller Fairlead
Part No. 8584



Rope Drum Safety Guard
Part No. 85-30176 Standard Drum
Part No. 85-30177 Short Drum

Pulley Block, 9000kg
Part No. 7750



Isolator Switch
Part No. 8370

Cable Tensioner
Part No. 5605



Emergency Stop Switch
Part No. 4-132-047



Bow Shackle
Part No. 0509

Wire Rope, 8mm x 23m
Part No. 8780



Wire Rope, 8mm x 30m
Part No. 200005



Battery Cables 2m
Part No. 256012



Mount Plate,
Part No. 7840 with mounting bolts



Synthetic Rope
10mm x 25m
Part No. 771025

Synthetic Rope
10mm x 30m
Part No. 771030

Limited Warranty. Superwinch (“seller”) warrants the original buyer (“you”) all parts and components except wire rope to be free from defects in materials and workmanship for a period of (one) 1 year from the provable date of purchase. Any Superwinch product which is defective will be repaired or replaced without charge to you, upon compliance with these procedures. The warranties set forth herein are exclusive and in lieu of all other warranties, whether oral or written, express or implied.

Limited Warranty Performance Procedure. Upon discovery of a defective Superwinch product, you shall mail to the seller at his factory or any factory authorised service centre written notice of such defect and mail, ship or otherwise deliver the defective Superwinch, postage or shipping prepaid. Repairs or replacements by seller under this Limited Warranty will normally be accomplished within (fifteen) 15 business days after receipt of the defective Superwinch. Seller or its authorised agents may make reasonable charges for parts and labour not covered by this Limited Warranty.

Warranty and Remedy Limitations and Exclusions. Repair and/or replacement of the defective Superwinch or component thereof as provided herein is the exclusive remedy for the buyer. The following exclusions or limitations of warranties and limitations of remedies shall be expressly applicable:

A. Express Warranties. Seller warrants that the Superwinch is as described in the “Superwinch Owner’s Manual” provided herein; no other express warranty is made in respect to the Superwinch. If any model or sample was shown to the buyer, such model or sample was used for illustrative purposes only, and shall not be constructed as a warranty that the Superwinch will conform to the sample or model. **Seller makes no express warranty with respect to wire rope incorporated in the product.**

B. Implied Warranties. **The implied warranty of merchantability and all other implied warranties shall only extend from the provable date of purchase for (one) 1 year. The wire rope is sold “as is”, without any implied warranties. Some States within the USA do not allow limitations on how long an implied warranty lasts, so the above limitation may not apply to you.**

C. Incidental and Consequential Damages. **Subject to seller’s Limited Warranty obligations set forth herein, seller shall not be responsible for incidental damages of any kind, or the consequential damages to property, loss of profits and loss of use which may be caused by any defect in, or malfunction, or failure of enclosed Superwinch. Some States within the USA do not allow exclusion or limitation of incidental or consequential damages, so the above limitation or exclusion may not apply to you.**

D. Condition of Warranty. Seller shall not be required to comply with its warranty duties provided herein if the defect, malfunction, or failure of the Superwinch was caused by damage (not resulting from defective or malfunctioning components) or unreasonable use by you. Unreasonable use shall include but is not limited to, installation or use of the Superwinch without compliance with the instructions contained in the Superwinch Owner’s Manual for the particular model number. Seller’s liability under this warranty or for any loss or damage to the Superwinch product shall not exceed the cost of correcting defects in or replacing the Superwinch product, and upon expiration of the warranty period, all such liability shall terminate. The agents, dealers and employees of the seller are not authorised to make modifications to this warranty, or additional warranties binding on the seller. According additional statements, whether oral or written, do not constitute warranties and should not be relied upon.

Legal Remedies of Buyer. This Limited Warranty gives you specific legal rights, and you may also have other right which vary from State to State within the USA and from country to country. You may also have implied warranty rights. In the event of a problem with Limited Warranty service or performance, the buyer may be able to go to small claims court, a state court or a federal district court in the USA or to appropriate jurisdictions outside the USA.

Inquiries. Any enquires regarding compliance with the warranties provided herein may be addressed in writing to:

Superwinch LTD.
Union Mine Road, Pitts Cleave
Tavistock, Devon. PL19 0PW

Tel: +44 (0) 1822 614101
Fax: +44 (0) 1822 615204

E-mail: sales@superwinch.net

Superwinch LLC.
Winch Drive, Putnam
Connecticut 06260 U.S.A.

Tel: 01 800 323 2031
Fax: 01 860 963 0811

E-mail: info@superwinch.com

NAVIJÁKY.CZ S.R.O.